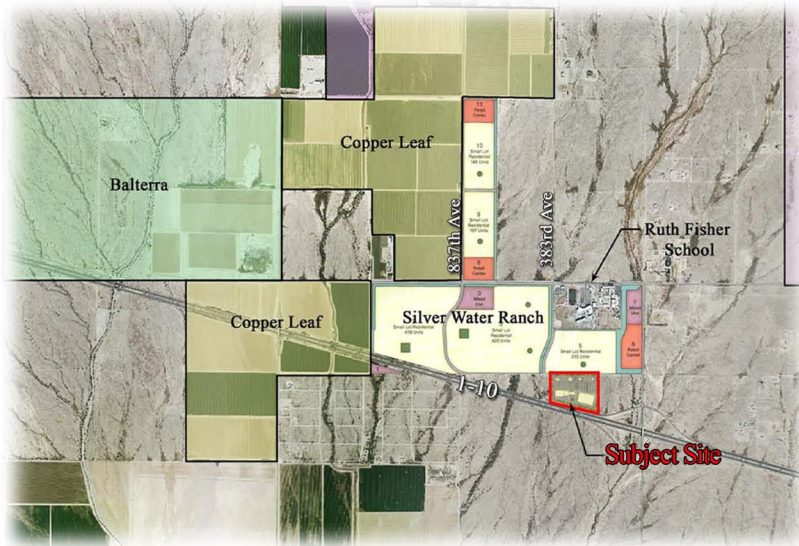


**T**onopah Marketplace is a 30 acre planned shopping center development in the Western Maricopa County community of Tonopah. Located directly adjacent to Interstate 10 near Wintersburg Road and surrounded by future master planned residential communities, Tonopah Marketplace is the first commercially zoned parcel of what will become a significant sub-regional commercial and retail core.



Tonopah Marketplace Context

## PROJECT INFO

- 30 Acre Community Retail
- Innovative & Flexible Site Design
- Convenient Access to the I-10
- First Plan to Comprise Future Tonopah/Freeway Commercial Core
- Responsive to Future Tonopah Demographic
- Contributes to the successful vision of the "Greater Tonopah Area" General Plan Goals.



Conceptual Building Elevations

LVA provided planning and design services including site investigation and analysis, rezoning plan preparation, and precise site planning. Additional services provided included landscape design and master plan, conceptual architectural elevations and theming, and team coordination for drainage analysis and utility service analysis. A comprehensive sign plan was also completed by LVA to maximize and allow future flexibility in determination of monument and building sign sizes and locations. A phased, modular site design approach was incorporated to provide ample opportunity for the future developer in targeting desired commercial users.

