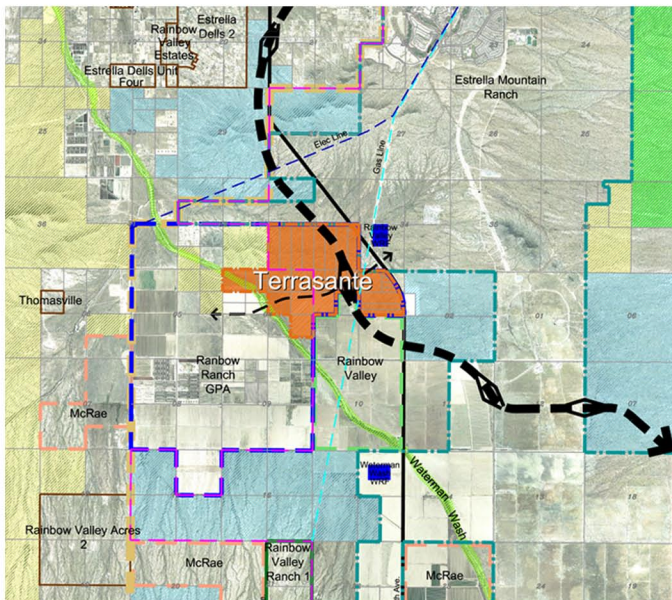
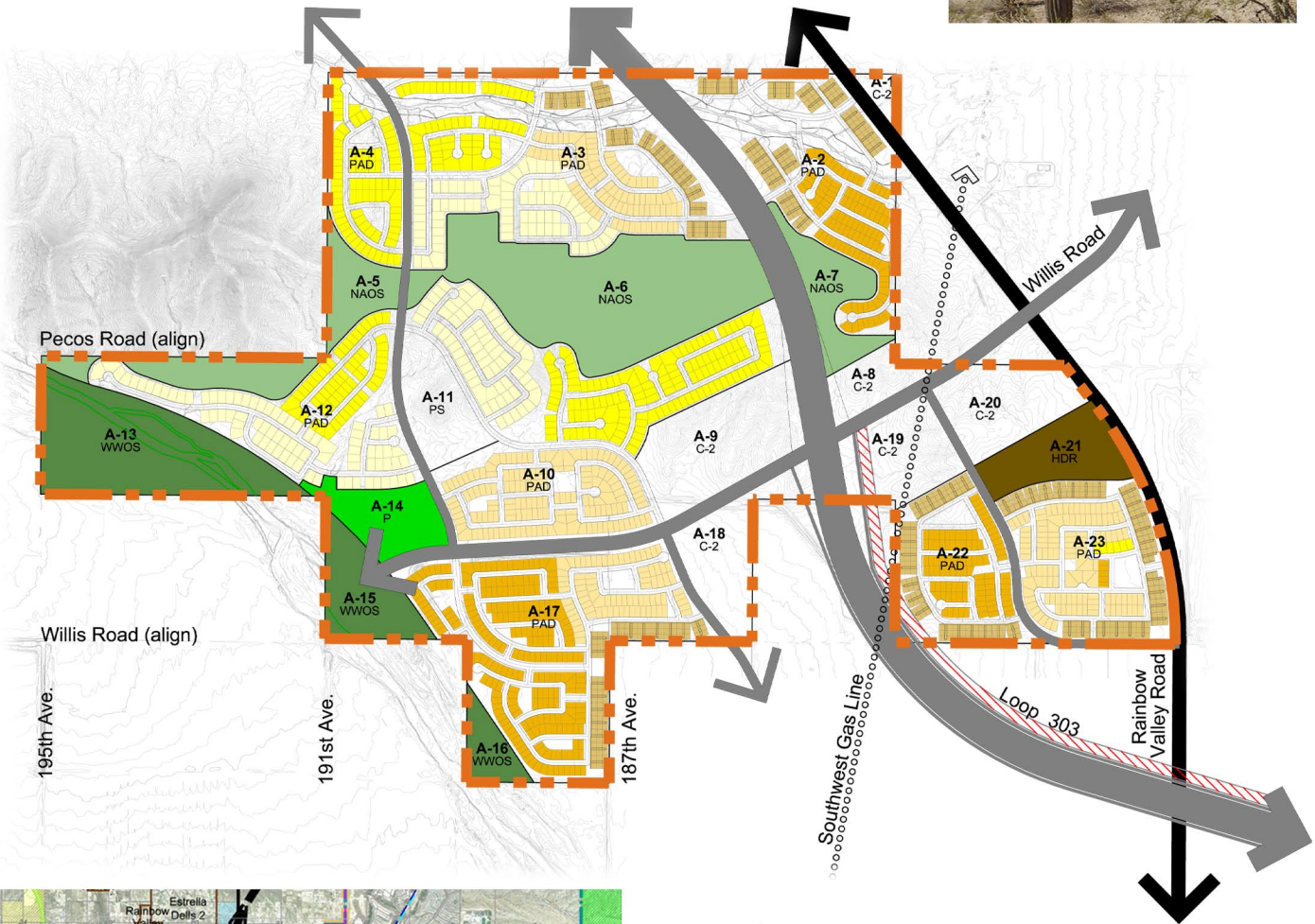


Terrasante

Goodyear, Arizona

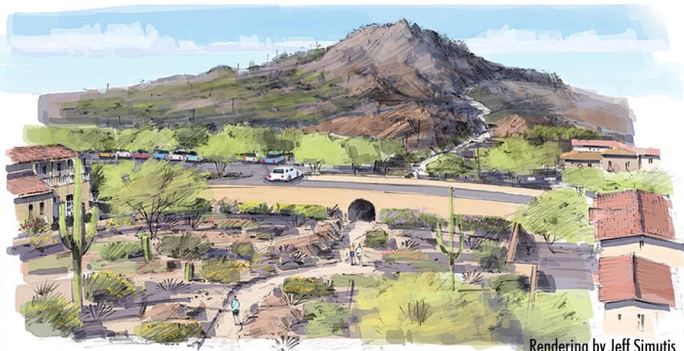
Terrasante is a planned area development located within the City of Goodyear. Nestled in one of the few foothill areas of the City, the community will provide a mix of housing and retail/commercial uses. Future residents will be served by a K-8 school, large neighborhood park and an extensive trail system that connects Terrasante with other regional trails and open space destinations.

LVA prepared the Major General Plan Amendment and provided the Planned Area Development rezoning tasks.



Project Information

- 848 acres
- Mix of residential, commercial and supportive land uses
- Extensive natural area open space, trails and park system



Rendering by Jeff Simutis