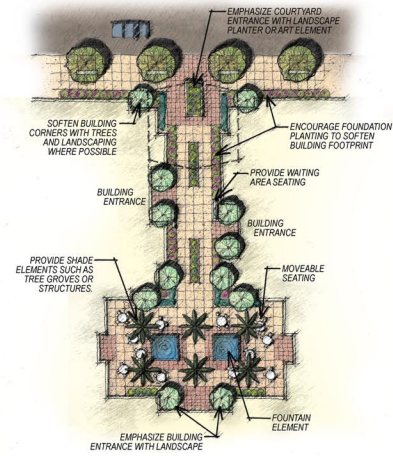
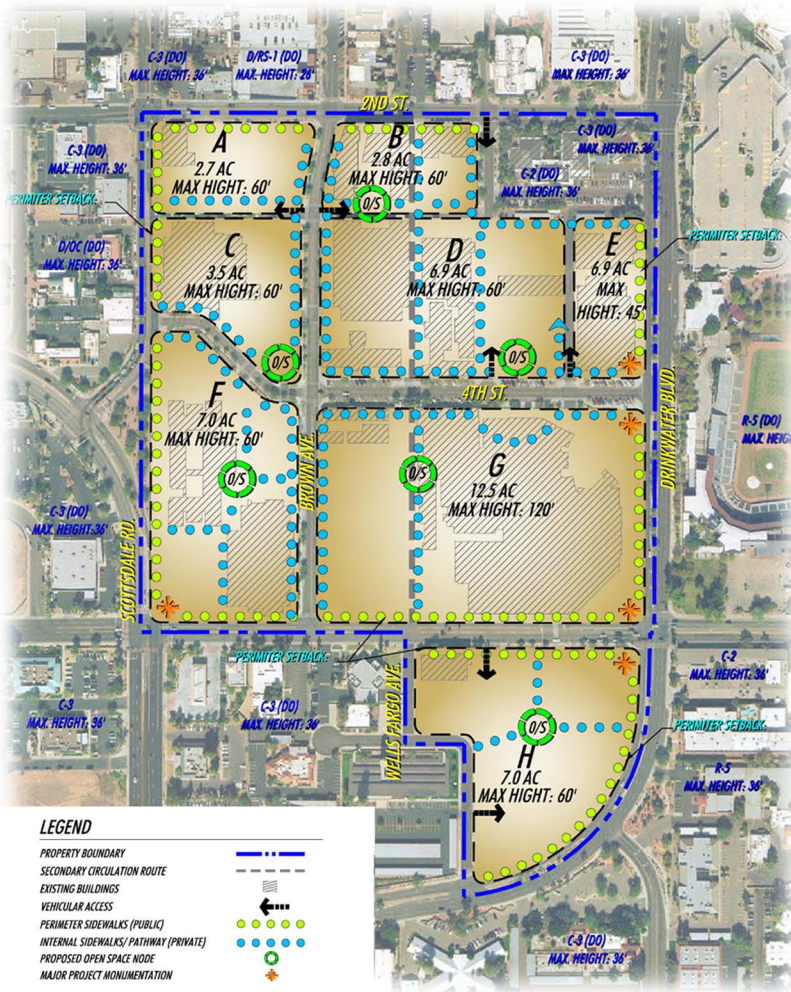


Scottsdale Healthcare is the largest employer in Scottsdale, and its Osborn Campus has been providing healthcare services to the Downtown Scottsdale community for nearly 50 years. As the community continues to grow, Scottsdale Healthcare recognized the need to develop a long range master plan for its 45-acre campus that will allow the hospital to meet the community's need for advanced healthcare services over coming decades.



A new campus master plan for the Osborn Medical Center was prepared to address expansion of the property including new patient towers, an enhanced hospital entry and public street abandonments. The plan also included analysis of development standards for building height, setbacks, buffering and internal circulation route standards. The integration of existing campus components and the study for the implementation over long term development schedules was a critical component of the plan.



### Project Information

- 45 Acres
- Special Campus Zoning Designation
- Open Space and Pedestrian Planning
- Circulation Plan
- Buffer Zone
- Sense of "Campus"
- City Approved Framework to Guide Future Growth
- Phasing Plan

LVA responsibilities included the campus master planning, site analysis, land planning, rezoning services, site planning, design theming, landscape, hardscape and softscape design.

