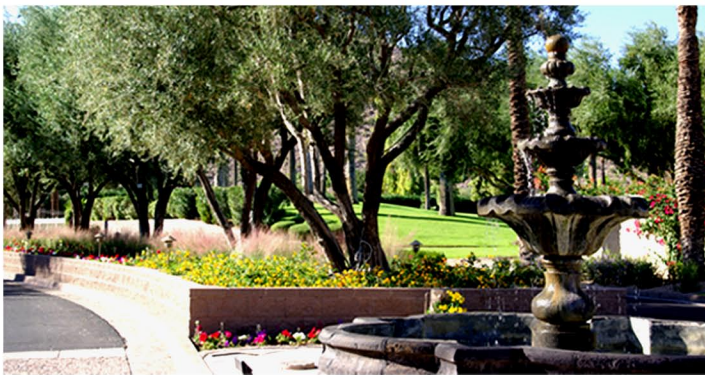
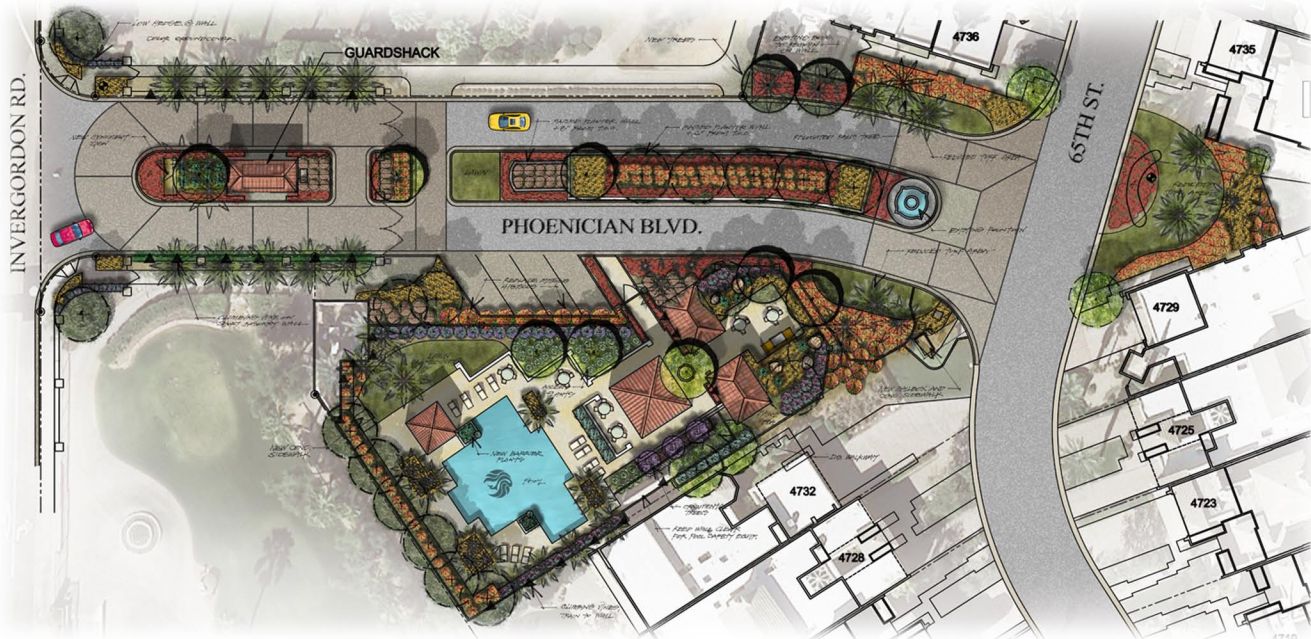


**P**hoenician East is a prestigious gated community of 93 homes in the heart of Scottsdale, Arizona. Since the community was built before resource conservation plans were established, an irrigation use analysis, water audit and a site assessment was conducted on its 14 acres. Landscape designs for the entry roadway, guard house and common areas were prepared, as well as, long range plan guidelines for turf area conversion.



## Project Information

- 14 Acres
- Irrigation Use Analysis & Water Audit
- Sitewide Arborist Assessment & Report
- Entry & Pool Area Redevelopment
- Construction Documents
- Construction Management
- Monument Sign Design
- Long Range Plan Guidelines for Turf Area Conversion



LVA's responsibilities include water and site assessment, conceptual landscape plans for entry roadway, guard house and common areas, design graphics preparation, presentation to the HOA landscape committee, landscape construction documents and construction administration services, long range plan guidelines for turf area conversion.