

Our Lady of Perpetual Help has been a cornerstone of the downtown Scottsdale community since its original founding as an adobe mission in 1933. Today OLPH has grown to include a 10-acre Parish and school campus with an additional 3 acres of developable vacant land north of Main Street. LVA worked closely with OLPH and the Phoenix Dioceses to complete a master plan for the campus that included entitlements for a new 34,000 square foot multi-purpose facility, modifications to existing pedestrian and vehicular circulation routes, an off-site parking evaluation and perimeter landscape enhancements. The placement of the new Parish Life Center was carefully considered to reduce impact to the existing campus facilities.



Project Information

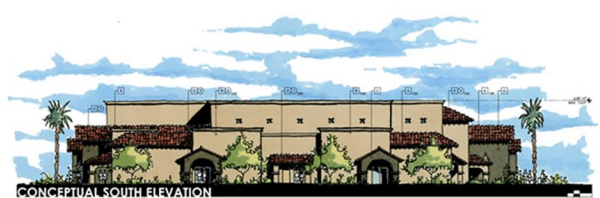
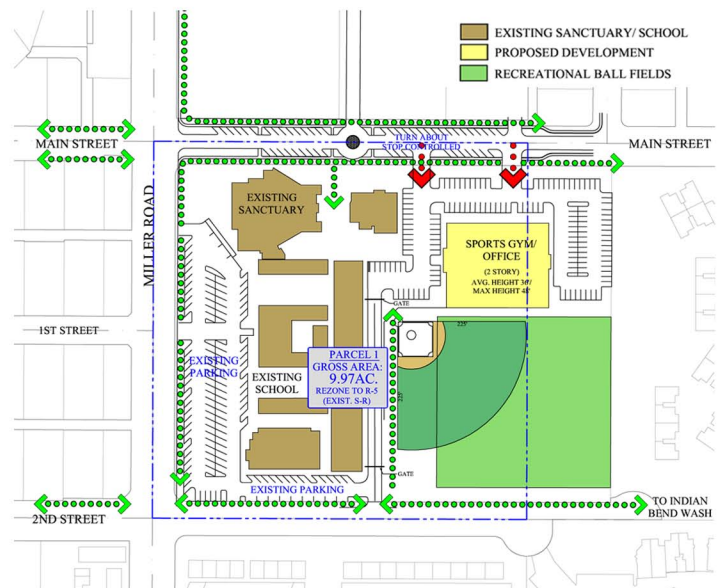
- 10 acre Campus
- 3 acres of Additional Developable Property
- 34,000 s.f. Parish Life Center
- Distinguished and Historic Community Focal Point
- Enhanced Civic Presence
- Safe Internal Pedestrian Circulation

LVA was responsible for the conceptual master plan, rezoning services, perimeter landscape design and the use permit.

LEGEND:

- PROPOSED ZONING
- DISTRICT/PARCEL BOUNDARY
- ◆ VEHICULAR ACCESS
- ◆ PEDESTRIAN ACCESS

- EXISTING SANCTUARY/ SCHOOL
- PROPOSED DEVELOPMENT
- RECREATIONAL BALL FIELDS



Renderings by Todd & Associates